

Assembly overview

1 - Toothed belt guard upper part

2 - Main drive toothed belt

- ☐ Check for wear.
- ☐ Do not kink.
- ☐ Removing, installing and tensioning
→ Chapter.

3 - Coupling drive toothed belt

- ☐ Check for wear.
- ☐ Do not kink.
- ☐ Removing, installing and tensioning
→ Chapter.

4 - 10 Nm + 1/4 turn (90°) further

- ☐ Renew
- ☐ Tighten from inside outwards.

5 - Ignition cable guide

6 - Camshaft housing

- ☐ Removing and installing
→ Chapter.
- ☐ Remove sealant remnants.
- ☐ Coat with AMV 188 003 A1 before fitting.
- ☐ When installing, fit vertically from above onto studs and dowel pins.

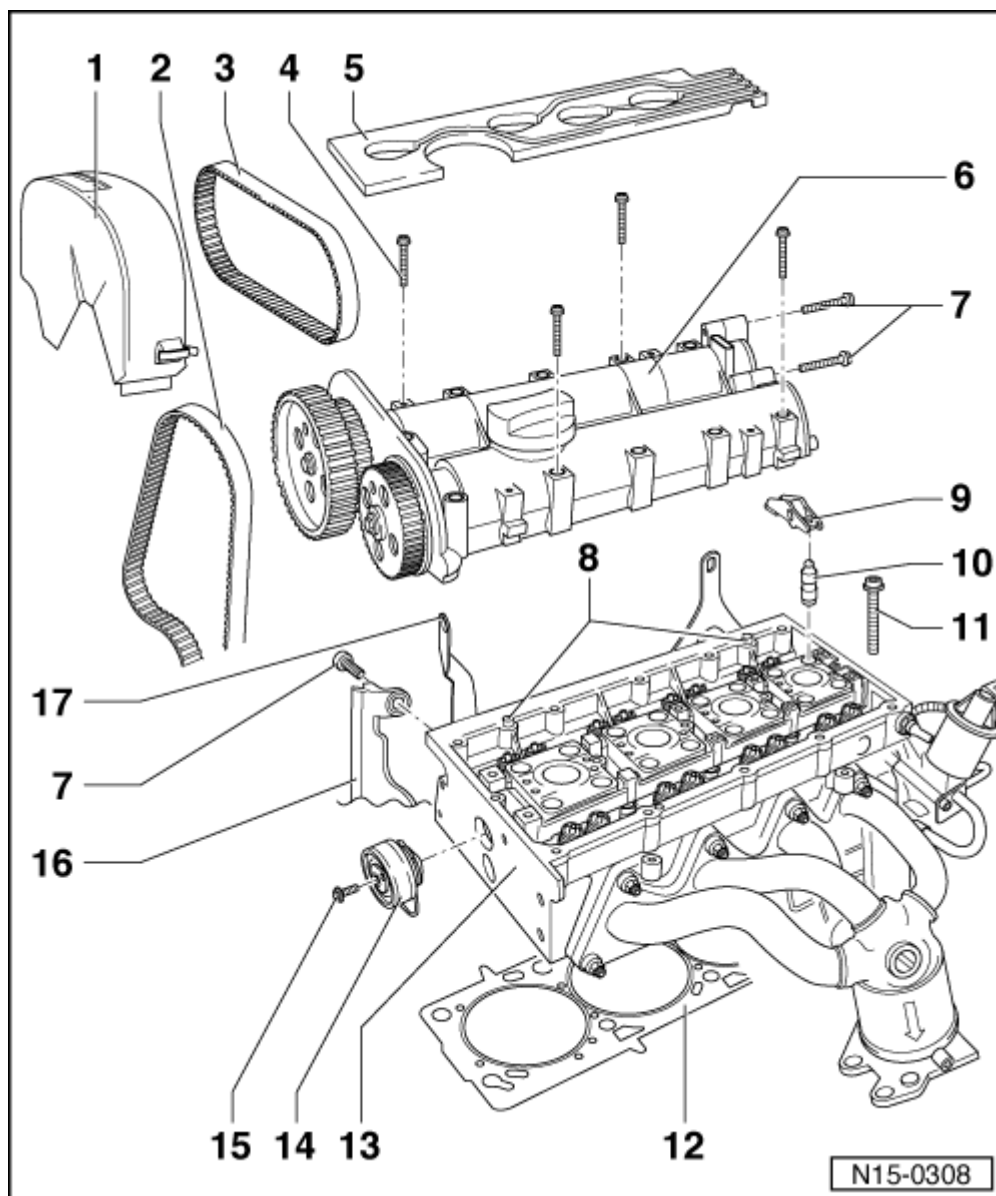
7 - 10 Nm

8 - Dowel pin

9 - Roller rocker finger

- ☐ Check for ease of movement.
- ☐ Check roller bearing for ease of movement.
- ☐ Oil contact surface.
- ☐ When installing, secure to support element using securing clip.

10 - Support element



- ❑ Do not interchange.
- ❑ With hydraulic valve clearance compensation.
- ❑ Before installing, check camshaft axial clearance → Fig..
- ❑ Oil contact surface.

11 - Cylinder head bolt

- ❑ Renew
- ❑ Note installation instructions and sequence when loosening and tightening → Chapter.

12 - Cylinder head gasket

- ❑ Renew
- ❑ Metal gasket
- ❑ If renewed, change coolant in entire system.

13 - Cylinder head

- ❑ Removing and installing → Chapter.
- ❑ Check for distortion → Fig..
- ❑ If renewed, change coolant in entire system.

14 - Coupling drive tensioning roller

- ❑ Checking → Chapter.
- ❑ Tensioning toothed belts → Chapter.

15 - 20 Nm

16 - Rear toothed belt guard

17 - Lifting eye

- ❑ Torque setting: 20 Nm.

18 -

Checking cylinder head for distortion

Max. permissible distortion: 0.05 mm.

